

From P1. management within a Pacific context.
 “Pain is an unpleasant sensory and emotional experience associated with actual or potential tissue damage or described in terms of such damage”.—Assessment and management therefore needs a multi-dimensional approach Here we have a good health care system but elsewhere in the Pacific there are very few resources to meet this problem.
 So does Pain matter?

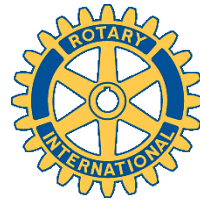
It impinges on the physical, psychosocial, spiritual and work life of the sufferer. It affects recreation, family and social relationships. It affects the quality of living and the standard of living of the sufferers who become invisible people and who die without dignity. Here in Australia, pain is a very common presenting issue when patients visit the Dr. In developing countries, it can take days or weeks to get to the Dr, by which time the disease has advanced and the pain increased, often to the point where travel becomes impossible. When they arrive, the resources to treat the pain are often inadequate and there are many barriers to receiving appropriate treatment. In 2008 the WHO estimated that 80% of people have little access to treatment for moderate to severe pain. A 2009 report from Human Rights Watch indicated that the lack of pain care is inexplicable and inexcusable—

able— treatment is available, its not low numbers of practitioners, it’s the invisibility of sufferers.
 As part of the work of International Assoc’n for the Study of Pain have developed a course to empower local health workers to deliver care. The course covers the anatomy, the physiology and the pharmacology of pain and its management. It teaches practitioners to recognize, assess and treat pain. Some of the other issues to be managed include

- Lack of effective supply and distribution systems.
- Lack of pain and palliative care guidelines
- Excessively strict drug control regulations
- Inadequate health care worker training.

The association already has a number of professional associations as partners, along with AusAid and the Arnott’s Foundation. What is needed? Partners, sponsors and donors to help run the courses to help people in pain. From a Rotary perspective this could become a bigger project than Interplast because the need is much greater. The program of Primary Trauma Care started in Hobart in the late 90’s is now the world’s preferred process for trauma assessment and care. This is another Tasmanian project that could bring relief to millions world-wide

Service Committees monthly meeting schedule.	
Meetings are at 6pm on Thursday evenings	
Club Service	1st Thu
International Service	1st Thu
Community Service	2nd Thu
Fund Raising Ctee	2nd Thu
New Generations Ctee	3rd Thu
Vocational Service	4th Thu



The Cog

29th July, 2010.

Weekly Bulletin No 5 of 2010-2011

Rotary Club of Glenorchy Inc.
 P.O. Box 9, GLENORCHY. TAS.7010
Serving the City of Glenorchy since 1964

Rotary International President 2010-2011
 Ray Klinginsmith

District 9830 District Governor
 Ted Richey

Club President
 Laurie Gray

Is there a doctor in the room?

In response to this question , occasionally heard when numbers of people are gathered—last week we could reply – “Yes 3 of them!”, all specializing in Pain Management. Chairman Kerry Bowerman introduced regular club visitor Dr Haydn Perndt OAM who has had a long association with the Rotary Medical Fellowship managed by Kerry on behalf of the Club. Dr Haydn then introduced Dr Max Sarma, a former journalist, bus & truck driver factory worker and porter now turned pain specialist who claims to have fallen into his role by misadventure, not good management. Dr Max gave a presentation on some aspects of pain /P4.



Dr Max Sarma, PP Kerry Bowerman OAM and Dr Haydn Perndt OAM

Rotary Grace

***For Good Food, Good Fellowship and the Opportunity to Serve,
 We Thank You O Lord, Amen.***

Last Week's meeting— 2010

Apologies:- Michael Berry,
Arnold Markham

Make-ups:- nil

Visiting Rotarians:- nil

Guests:- Stephenie Barrett, Cheryl Osborne,
Rhonda Walker, Marianne Wortel

Raffle:- Maurie Osborne

Business arising :-

As part of our Rotary Information updates, Pres Elect Rosie outlined the process to be followed in electing new members to the Club. It is only when a person signs the membership form and pays their subscription after their induction that they become a member.

President Laurie: in closing thanked Marianne for coming along again. He expressed his delight at the successful evening and the number of people here, especially welcoming those prospective members who will be inducted into the club this week. He thanked our 3 Doctors for coming along and for the great work they are doing. He plans to raise the Pain Management project at District level in order to gain State-wide support for it.

Northern Thailand Trip

Kerry is meeting regularly with the members who are planning to accompany him to northern Thailand, probably departing from Sydney on 9th January 2011. The current plan is to spend about 7 days in the North (Chang Rei—Chang Mei area) visiting the Rotary district and then a few days touring as a group in the south. Details are still being discussed

Family of Rotary

Birthdays:- John Berry 29/7

Anniversaries:- Jack Eaton 31/7—35 years.

Sick list:- Reg Lightfoot

Diary notes

12/8 PP Gayle Pitchford—Membrship

19/8 PDG Tony Hennessey



Kerry Bowerman and Dr Emily Lee, who together now coordinate the Rotary Medical Fellowship

Dr Emily gave us a brief 'heads-up' on the fact that in 6 weeks time the Anesthetist from the Solomon Islands will be spending 2 weeks at the RHH, 1 week at LGH and 1 week at Wollongong General Hospital. At the Royal HH, there are 25 anesthetists and ancillary staff. In the Solomon Islands there is 1 anesthetist, 1 registrar and 2 nurses. An anesthetist from the RHH will be going to the Solomon Islands for 4 weeks to do relief work while Dr Keini is here. We look forward to supporting and meeting Dr Keini during his visit to Hobart.

This Week—29th July

Registrations: John Steenhuis, Geoff Hyland

Toast to Rotary International:- Sue Byrnes

Chairperson:- President Laurie

Guest Speaker:- District Governor
Ted Richey

Service C'tee meeting - Nil

Next Week—5th August

Registrations: Jenny Briggs, Steve Walker

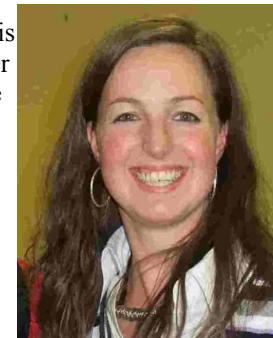
Toast to Rotary International: Rob Batge

Chairperson:- Peter Brownrigg

Guest Speaker:- Rtn Jill Whitehouse—GSE

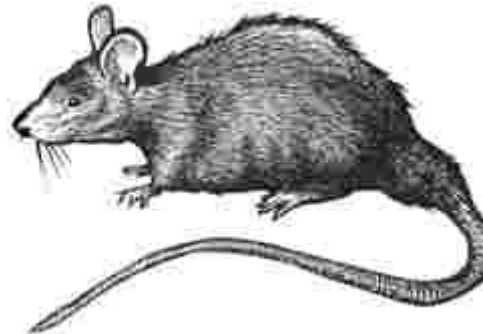
Service C'tee Meetings :- Club Service and
International Service

Marianne Wortel is with us for another 3 1/2 weeks before returning to Holland. She still has some un-booked time and would appreciate the opportunity to catch up with everyone.



Quiz???

Who remembers why this animal appeared at last week's meeting?



Food for thought

A lawyer dies and goes to Heaven. "There must be some mistake," the lawyer argues. "I'm too young to die. I'm only fifty five." "Fifty five?" says Saint Peter. "No, according to our calculations, you're eighty two." "How'd you get that?" the lawyer asks. Answers St. Peter, "We added up your billable hours."

I was in a supermarket the other day, saw a product that got me to thinking: if the Ancient Greek goddess of love was Aphrodite, then I reckon that the Ancient Greek goddess of sticking to your purpose was Araldite.

Rotary District and Club Information

District Governor: Ted Richey

Assistant DG: Colin Heron

*RC of Glenorchy was chartered on 20/4/1964
Club No 18446.
The Club meets at the Glenorchy R.S.L Club on
Thursdays at 6pm for 6.30pm*

President: Laurie Gray
Vice President: Brian Richardson
President Elect: Rosalie Marine
Imm. Past President: Paul Berry
Secretary: Gayle Pitchford
Treasurer: Jack Eaton

Contact Details

Secretary—

P.O. Box 9, Glenorchy.TAS. 7010

Web site

www.glenorchyrotaryclub.org.au

Bulletin Editor: Beres Taylor

berestaylor@bigpond.com

**Meeting Apologies should reach the
President-Elect on 62155810 by no
later than 3.00pm Thursdays**